

# AUTUMN IN THREE

MEDIUM UP 3/4 SWING

LIBOR ŠMOLDAS

## INTRO

STREIGHT EIGHTS

Musical notation for the Intro section, measures 1-4. The key signature is one sharp (F#) and the time signature is 3/4. The melody is in the treble clef, and the bass line is in the bass clef. The bass line consists of chords: BΔ, EΔ#11, AΔ#11, and a repeat sign. The melody features a sequence of eighth notes in the first two measures, followed by a series of quarter notes with ties in the last two measures.

7 **A** SWING

Musical notation for section A, measures 7-10. The key signature is one flat (Bb) and the time signature is 3/4. The melody is in the treble clef, and the bass line is in the bass clef. The bass line consists of chords: DbΔ9, GbΔ, CØ, and F7. The melody features a sequence of eighth notes in the first two measures, followed by a sequence of quarter notes in the last two measures.

11

Musical notation for section A, measures 11-14. The key signature is one flat (Bb) and the time signature is 3/4. The melody is in the treble clef, and the bass line is in the bass clef. The bass line consists of chords: Bbm7, Bbm7, Am7, Abm9, and Db13. The melody features a sequence of eighth notes in the first two measures, followed by a sequence of quarter notes in the last two measures.

15

Musical notation for section A, measures 15-18. The key signature is one flat (Bb) and the time signature is 3/4. The melody is in the treble clef, and the bass line is in the bass clef. The bass line consists of chords: GØ, C7b9, FΔ, and FΔ9. The melody features a sequence of quarter notes in the first two measures, followed by a sequence of eighth notes in the last two measures.

19

Musical notation for section A, measures 19-22. The key signature is one flat (Bb) and the time signature is 3/4. The melody is in the treble clef, and the bass line is in the bass clef. The bass line consists of chords: Bb9(#11), a repeat sign, Abm7, and Db13sus4. The melody features a sequence of quarter notes in the first two measures, followed by a sequence of eighth notes in the last two measures.

23 **B**

Musical notation for section B, measures 23-26. The key signature is one flat (Bb) and the time signature is 3/4. The melody is in the treble clef, and the bass line is in the bass clef. The bass line consists of chords: GbΔ, Bm7/Gb, GbΔ, and Bm7/Gb. The melody features a sequence of quarter notes in the first two measures, followed by a sequence of quarter notes in the last two measures.

2

27

Chords:  $Gb\Delta$ ,  $Bm7/Gb$ ,  $F\emptyset$ ,  $Bb7$

31

Chords:  $Ebm7$ ,  $E/Eb$ ,  $F/Eb$ ,  $Gb/Eb$

35

Chords:  $G/Eb$ ,  $Ab/Eb$ ,  $Gb^9sus4$ ,  $Gb^9$

39 STREIGHT EIGHTS

Chords:  $B\Delta$ ,  $E\Delta\#11$ ,  $A\Delta\#11$ , %

1. TO CODA

45

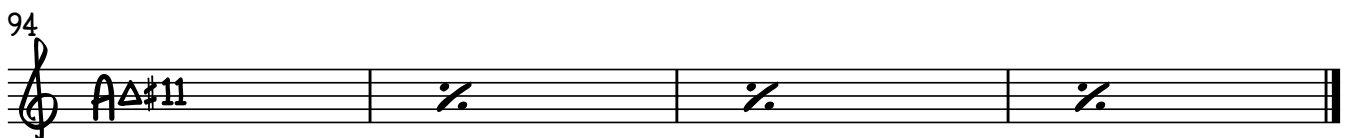
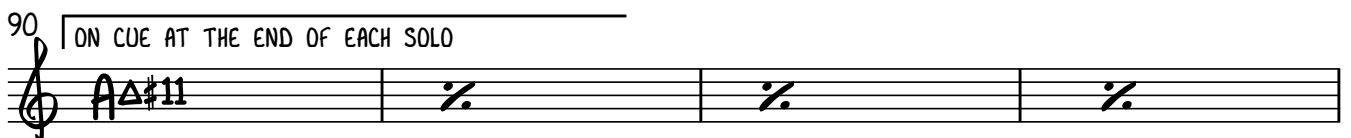
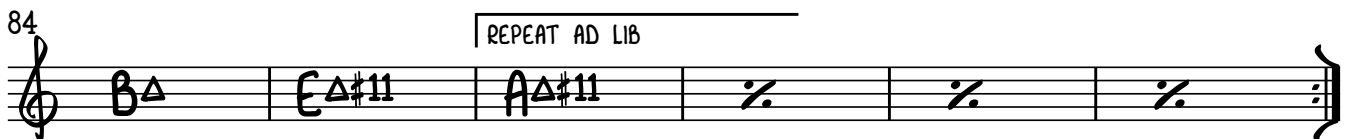
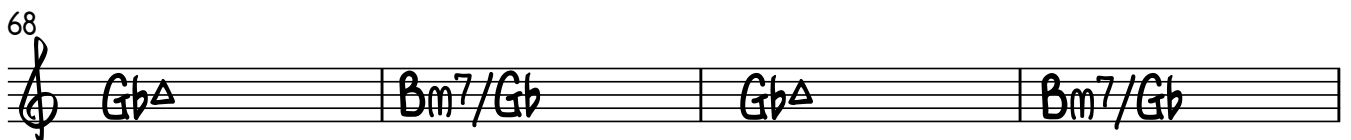
Chords:  $A\Delta\#11$ , %

2. TO SOLOS

CODA

Chord:  $Db\Delta\#11$

## 52 SOLOS:



AFTER SOLOS D.S. AL CODA SENZA REP.